



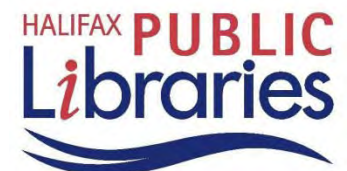
WELCOME!

Halifax Central Library

We've listened to what you've told us

Public Consultation

November 4, 2010





Meet the Architect

George Cotaras

Vice-President

Fowler Bauld & Mitchell Ltd.

Halifax, Nova Scotia



You've
told us that

**... you wanted an
external bookdrop**



There will be exterior bookdrops.



We are also trying to have a lay-by on Queen Street so you can stop at the side, run to the book drop a few meters away and back to your car (similar to Keshen Goodman Library).



We are working with HRM Traffic Engineering now to integrate this into the design.





You've
asked us
for

**... a library with good
acoustics throughout**



We too recognize the acoustic requirements within the new library where people want open, accessible spaces with collaborative study areas, children's areas and activity areas where conversation and activity is permitted and even encouraged, all in the same 'space' as the more traditional parts of the library.

With this modern library concept the objective and challenge is to achieve a balance between the containment of local noise to the local area, such as a children's play/learning area and performance/ activity areas, while maintaining a generally open space.

continued...



continuation...

As you may have seen at Public Consultation #1, we illustrated the large team of specialist consultants we have for this project.

One of these specialists is an acoustical consultant dedicated to working on this aspect of the project with us. They have experience with exactly these sorts of issues with several public and university libraries, and other similar projects.

We have had several meetings already on this aspect of the project and will continue to do so as the library design is further refined.



You told
us that
that

**... sustainability is
important to everyone**



Truly sustainable design is a holistic enterprise encompassing concepts such as health and wellness, democracy, human scale and social responsibility.

The new library must be:

- Socially Sustainable - if the building is not relevant to the community and is not fully utilized, it cannot be considered sustainable! The building must reflect the hopes and dreams of the community it serves. These consultations and the consultations held in 2008 reflect that.
- Economically Sustainable - if we cannot afford to build it or to operate it, it cannot be considered sustainable!

continued...





continuation...

- Environmentally Sustainable - many of the aspirations we've heard for the new library reflect environmental objectives:
 - access to lots of natural light, great views
 - use of natural and healthy materials
 - direct visual access between interior and exterior
 - 'bring the green indoors'
 - accessible green roof and a winter garden

We have a specialist consulting firm dedicated to working with us on this aspect of the project. We are striving to do the best we can. All new buildings in HRM must target LEED Silver certification. We are aiming for LEED Gold and striving to achieve this. We want the new library to be exemplary of sustainable design in the most holistic way.



You've
told us
that

**... you want to have a
fully accessible building**



We are striving to design the building with the widest possible range of users in mind, not only those with physical challenges and the elderly but also people of all ages and abilities.



There are many issues to be addressed to create an environment that is usable and welcoming to everyone, but we will be following the principles of equality, flexibility, simplicity, safety and ease of use.



We want to tailor the building to a broad range of cognitive, sensory and mobility capacities to create an inclusive environment that reflects the diversity of people within our society and removes unnecessary barriers. This includes children, and parents with children and strollers.



... continued



... continuation

Some very basic things include wide aisles, wider turning radii for wheelchairs, no steps at entrances, larger washrooms that are easy to find, and safe, and also ‘family’ types of washrooms.

We are setting up a community working group to specifically address all aspects of accessibility as we move further into the development of the design.

And surely an inclusive library is more sustainable library too!



You've told
us that

**... it is important to have
art integrated into the
building**



HRM has a budget of almost a half million dollars dedicated to the incorporation of public art into the new library building. (We cannot touch this money by the way!)



In the very near future HRM will be issuing a Request for Qualifications to the art community.



We are looking forward to the proposals and then working with a number artists in this amazing opportunity and initiative for the municipality and the library.





You have
asked us

**... how the building is a
reflection of Halifax**



Although the new building has a different physical representation from other buildings in Halifax, it reflects our local and regional cultural aspirations.

1. It occupies a significant corner in the downtown core and creates spaces and places for its citizens to gather and interact, both outside and inside.
2. It visually connects two important views of our Maritime history: The Citadel and the Harbour. Besides offering some great actual views, these are also conceptually important. Halifax has always had a connection to the rest of world through its harbour. Libraries offer a connection to the world too. Not only will we be able to connect visually to the Citadel and the harbour we will be able to connect to the community.....and the world.

continued...



... continuation

3. We are referencing the history of the fantastic spring garden that used to occupy this exact site many years ago and gave a name to the street it faces. There will be green within the building, but also a green motif on the exterior walls recollecting those gardens and the surrounding trees. We are bringing back the green and creating a winter garden as a complement to the summer garden, The Public Gardens.
4. The building represents a bold new direction for the municipality. It is open, democratic and welcoming. It represents the creativity and talent of the citizens of Halifax. It is a building of our time and our aspirations for the future.



You
have
us
asked
asked

**... about the size of
the collection**



The collection in the new library will be 50% bigger than what is currently in the Spring Garden Road Branch.



What you are also seeing in the new library, and what may be deceiving you from appreciating this fact, are all the other public spaces people have asked for such as reading spaces, study and meeting spaces, as well as access to technology. These spaces make the collection appear smaller, but it's actually larger.





You've
told us
that

**... you want technology
throughout the building**



There will be lots of computers for everyone; many around the atrium. These will be able to be changed as the technology changes.



There will be dedicated catalogue access terminals, throughout the building.



There will be gaming stations available, for all age groups, throughout.



And there will be power and Wi-Fi connections throughout if you chose to come with your own laptop.



You've
asked
us for

**... a variety of reading,
seating and study areas**



You will see a variety of spaces throughout the building; some open to the atrium; some cozy and secluded.



There will be open reading areas and a mix of seating and furniture types.



There will be seminar-type rooms and well as small and intimate spaces.

There will be study cells.



And there is also the Halifax Living Room on Level 5.



You've
asked
us if

**... there will be staff to
help you**



Yes, there will be staff to help. There is a 'Welcome Desk' immediately upon entering the building and a Customer Service desk at this level.



There will be staffed information desks at each level, usually two per floor.



You will continue to get the same friendly service from the same staff at the current Spring Garden Road branch; only more of them.





You
have asked
us

**... for a variety of
program and meeting
spaces**



There is a variety of program spaces in the new library. There are program rooms dedicated to children and others to adult learning.

There is the 'City Space' on Level 1 that will facilitate any number and variety of community cultural events, both big and small.



Meet the Design Architect

Morten Schmidt

Founding Partner

schmidt hammer lassen architects

Aarhus, Denmark

The New Halifax Central Library















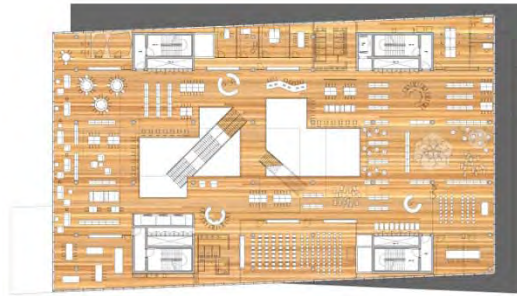




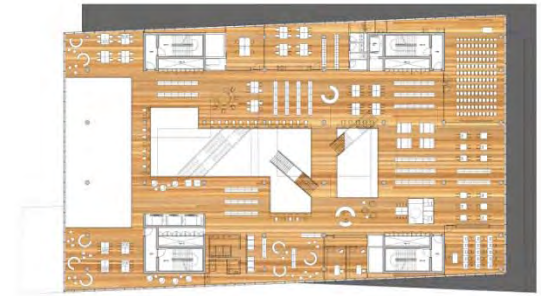




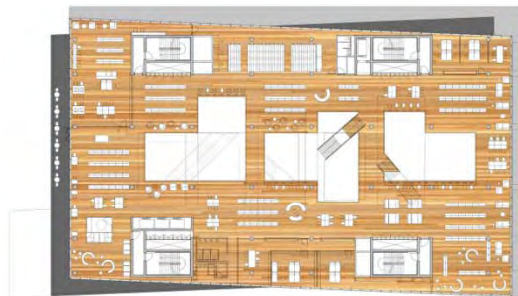
1



2



3



4

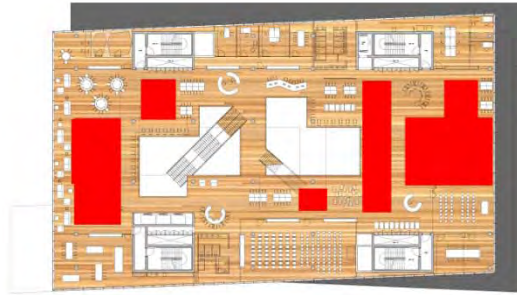


5

Collection



1



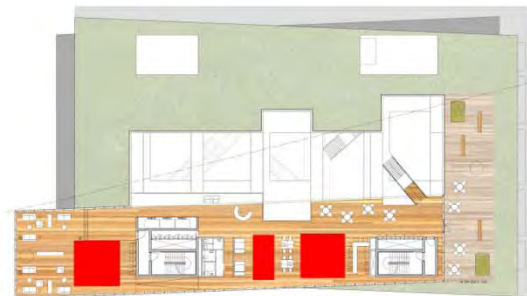
2



3



4

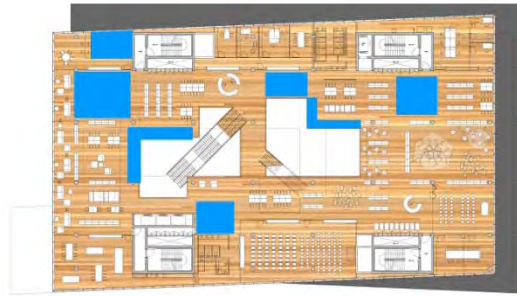


5

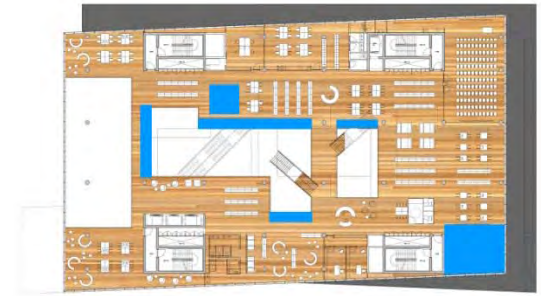
Technology



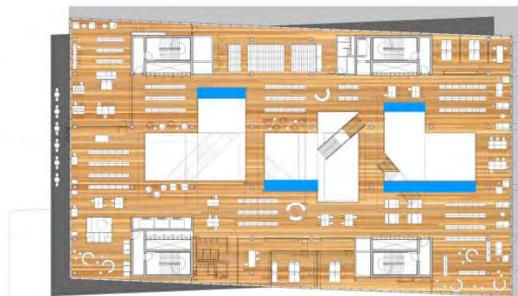
1



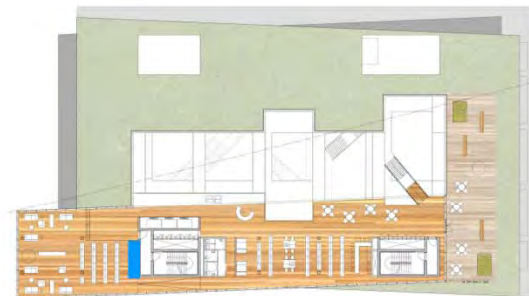
2



3



4

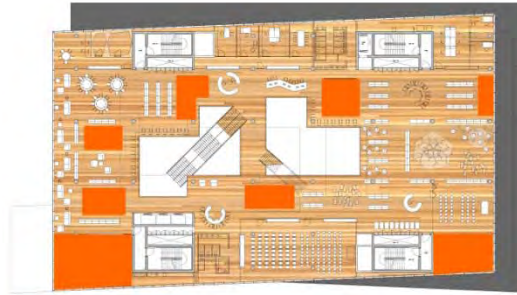


5

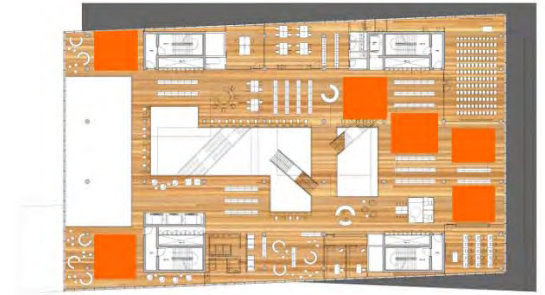
Study



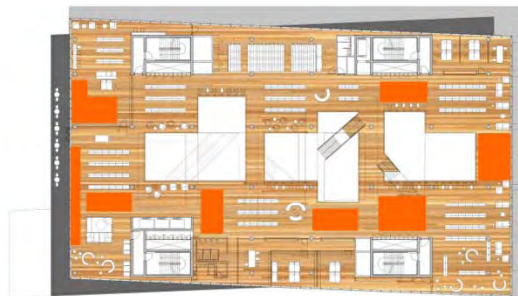
1



2



3



4

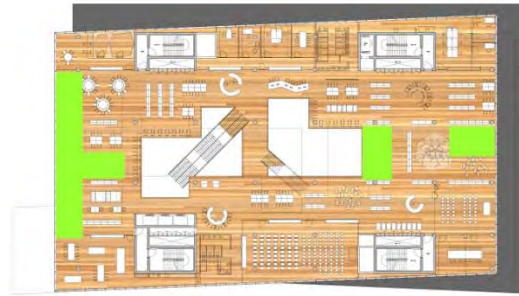


5

Reading / Seating



1



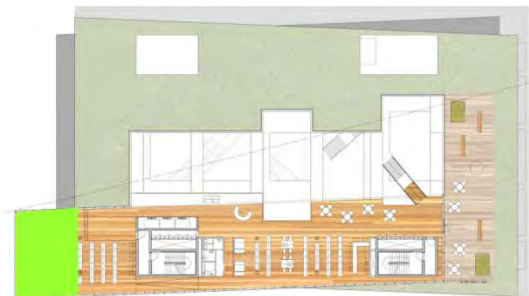
2



3



4

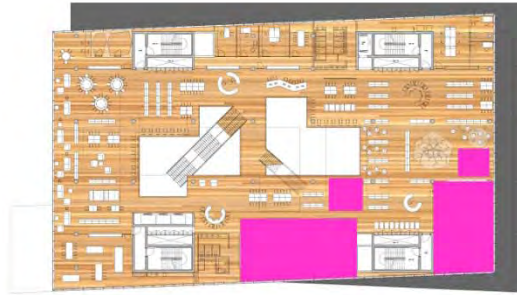


5

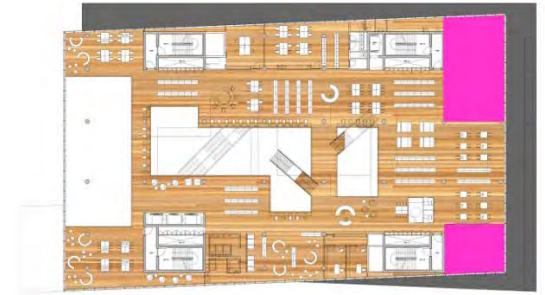
Program Spaces



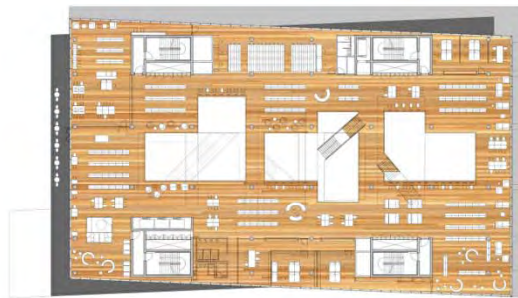
1



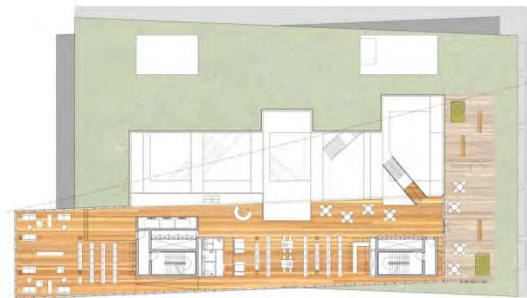
2



3



4

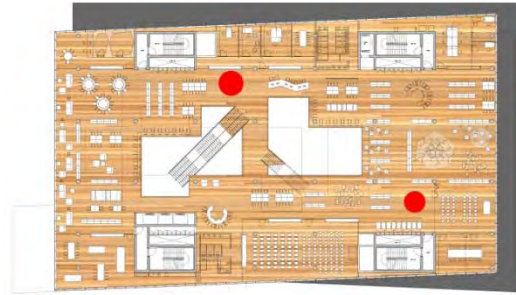


5

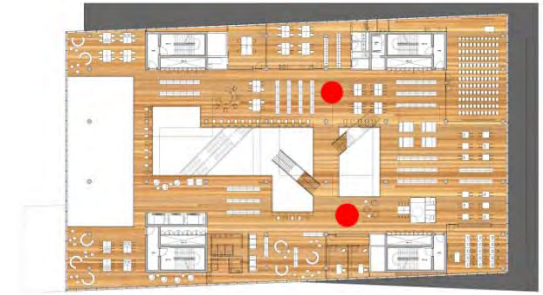
Information Desks



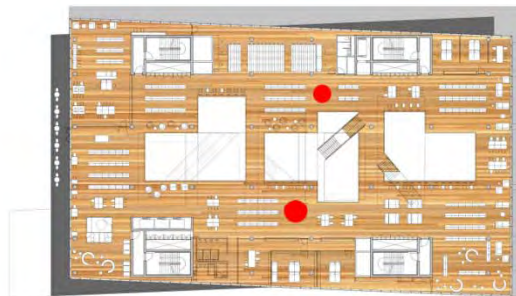
1



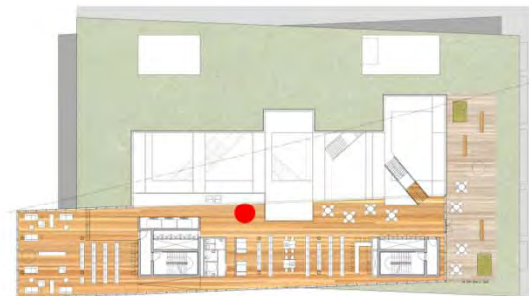
2



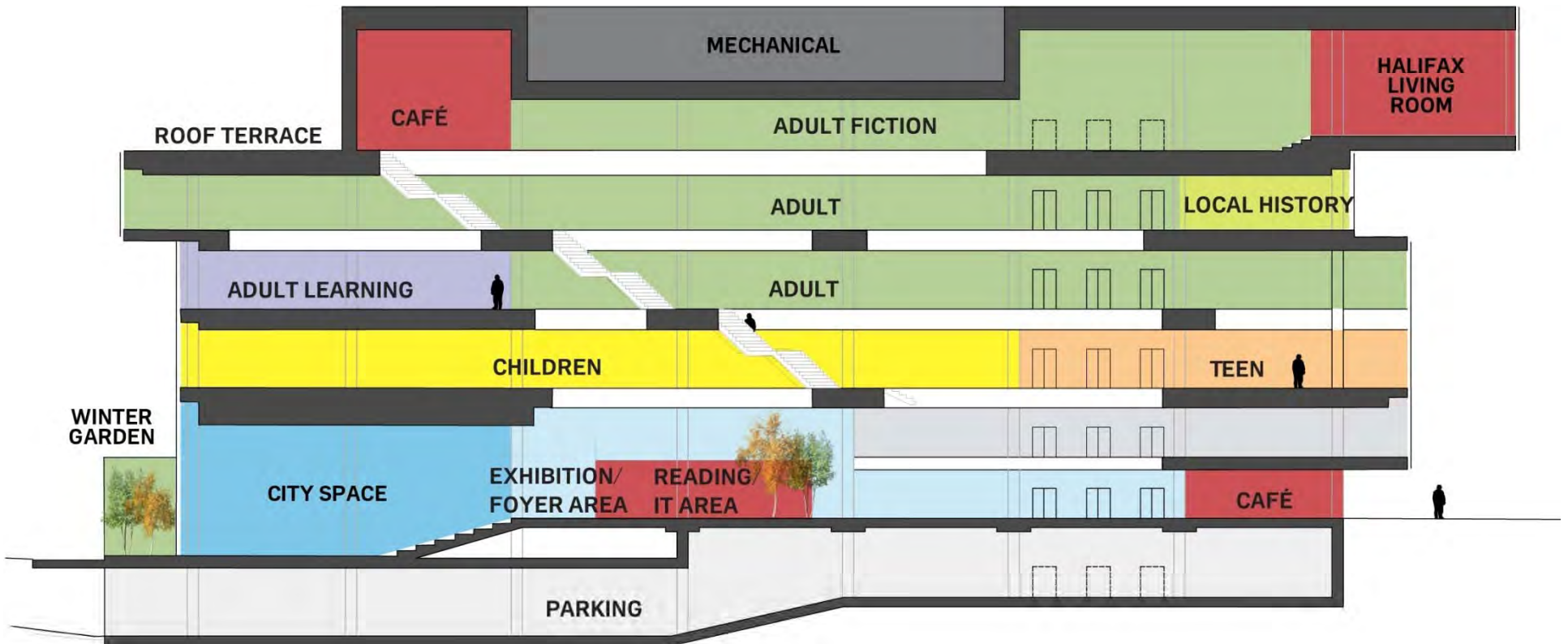
3

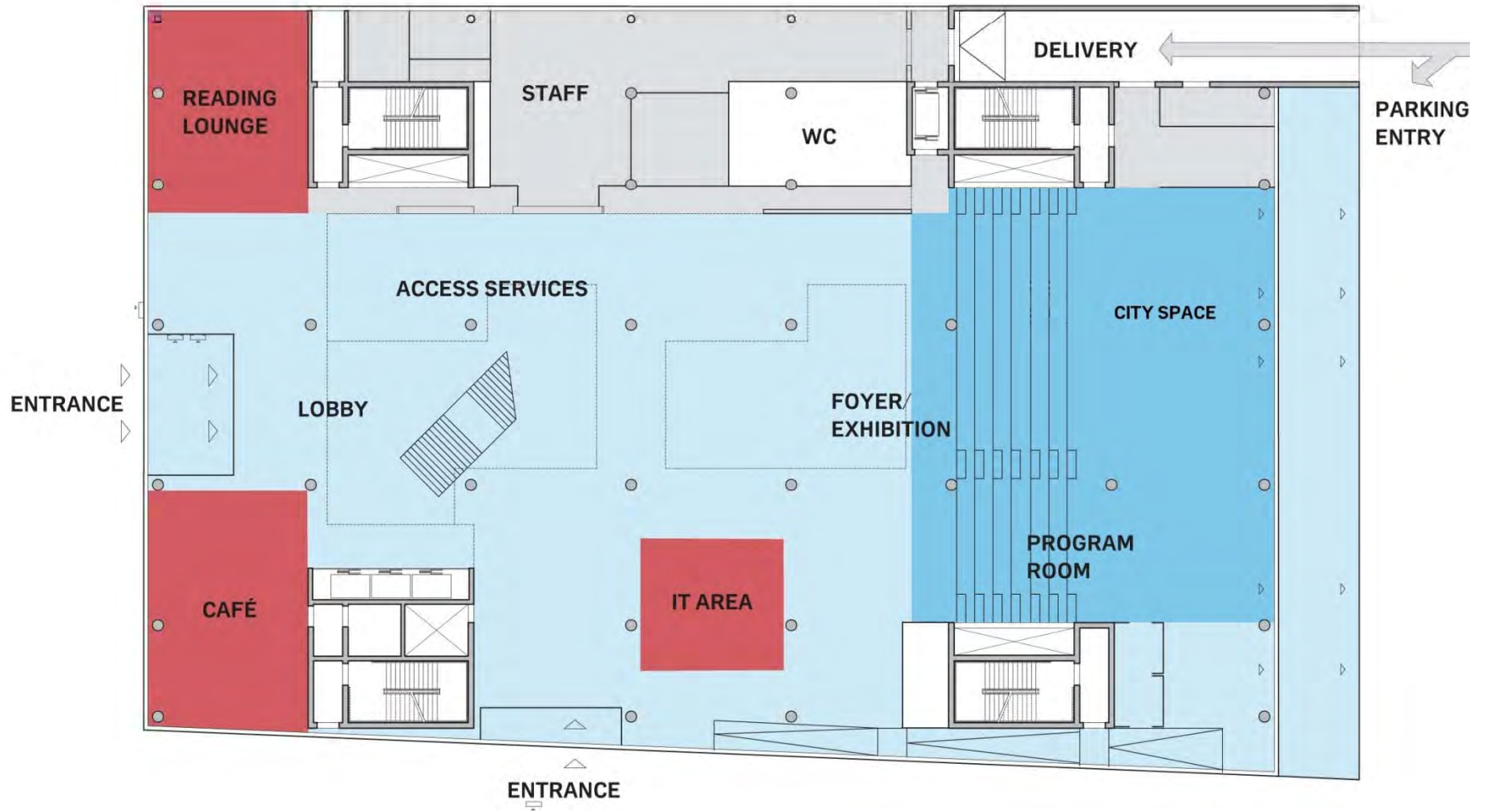


4

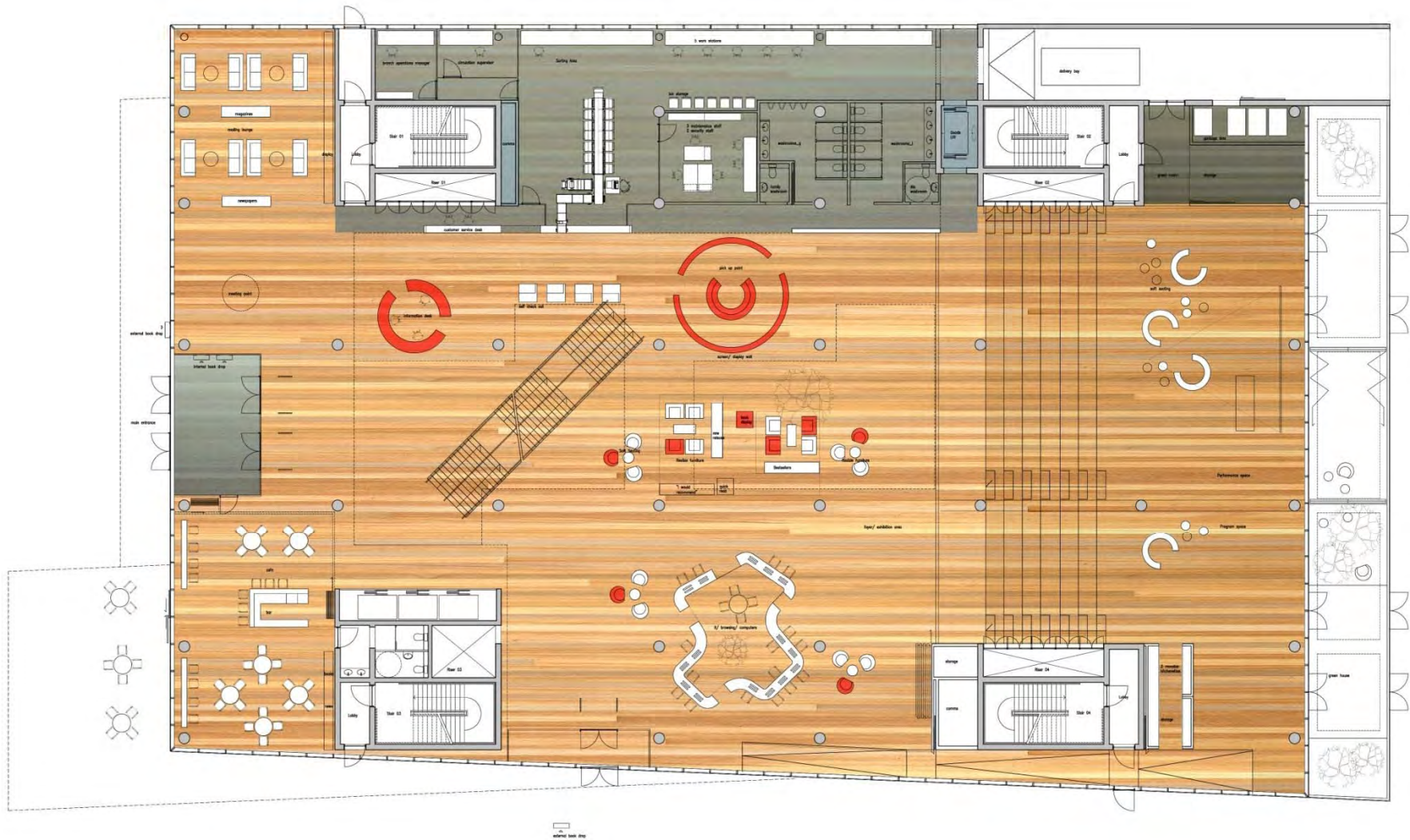


5



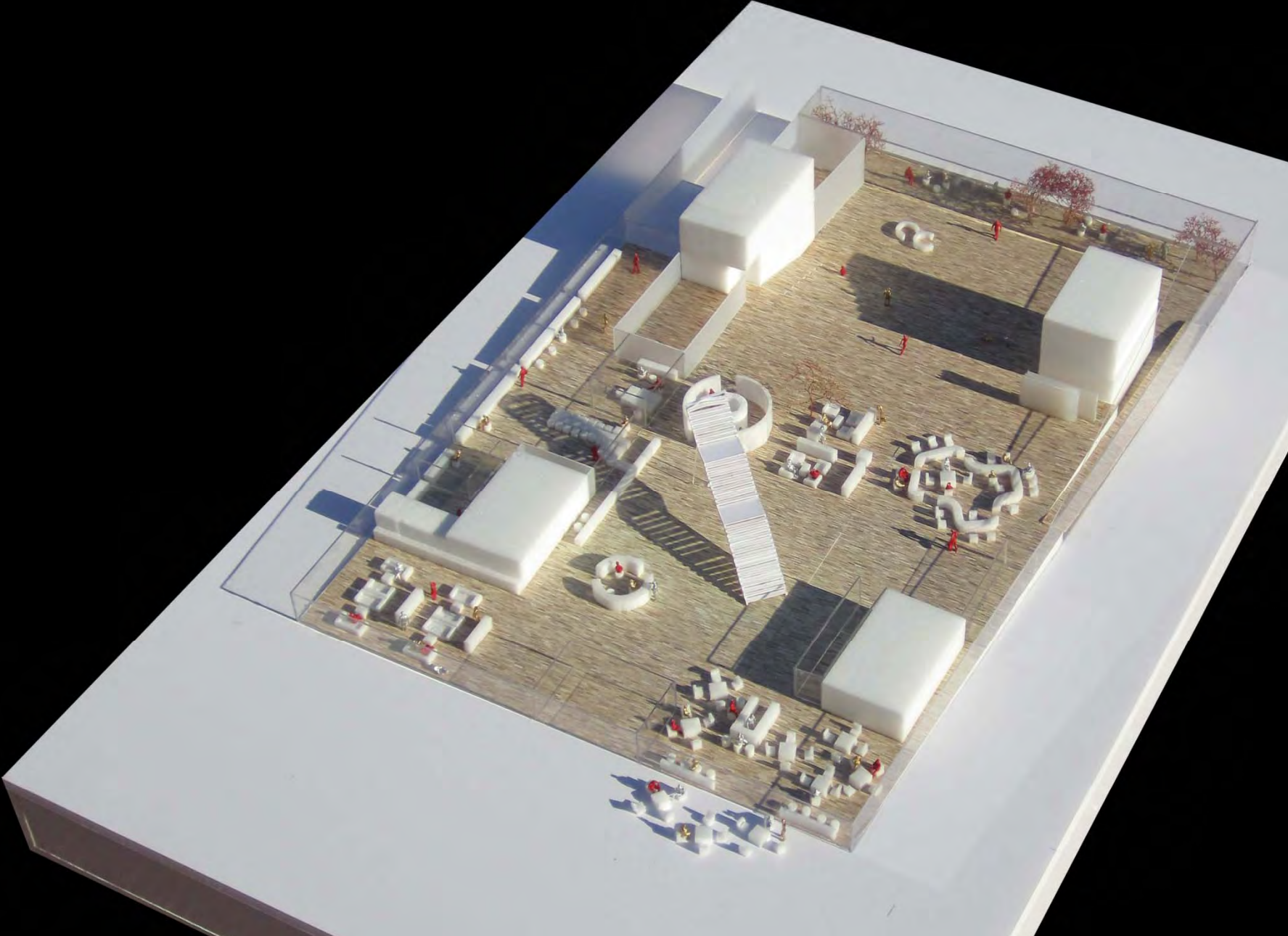


Level 1 – Street Level - Adjacencies



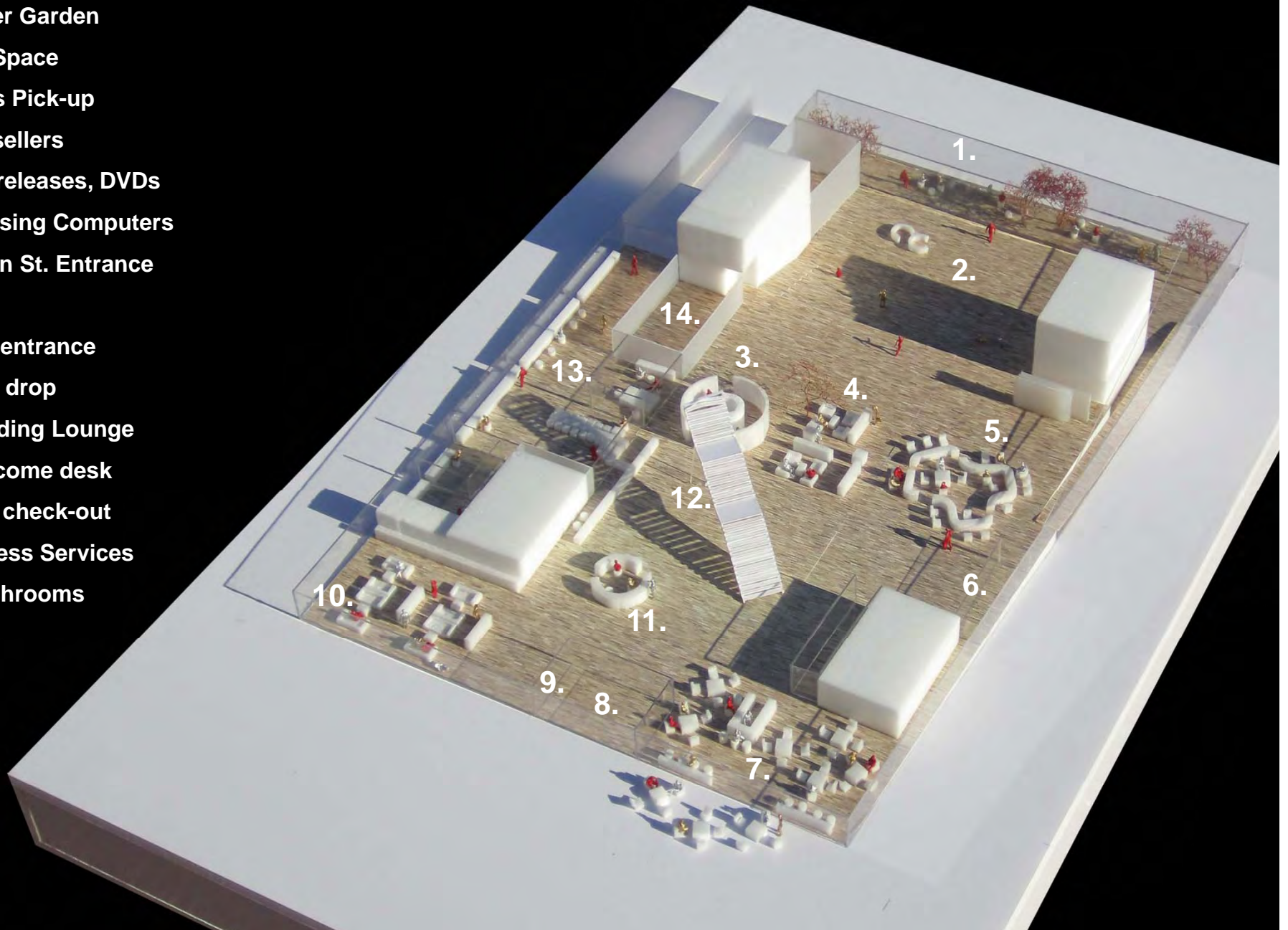
Level 1 – Street Level

Level 1 / Street Level



Level 1 / Street Level

1. Winter Garden
2. City Space
3. Holds Pick-up
4. Bestsellers
New releases, DVDs
5. Browsing Computers
6. Queen St. Entrance
7. Café
8. Main entrance
9. Book drop
10. Reading Lounge
11. Welcome desk
12. Self check-out
13. Access Services
14. Washrooms



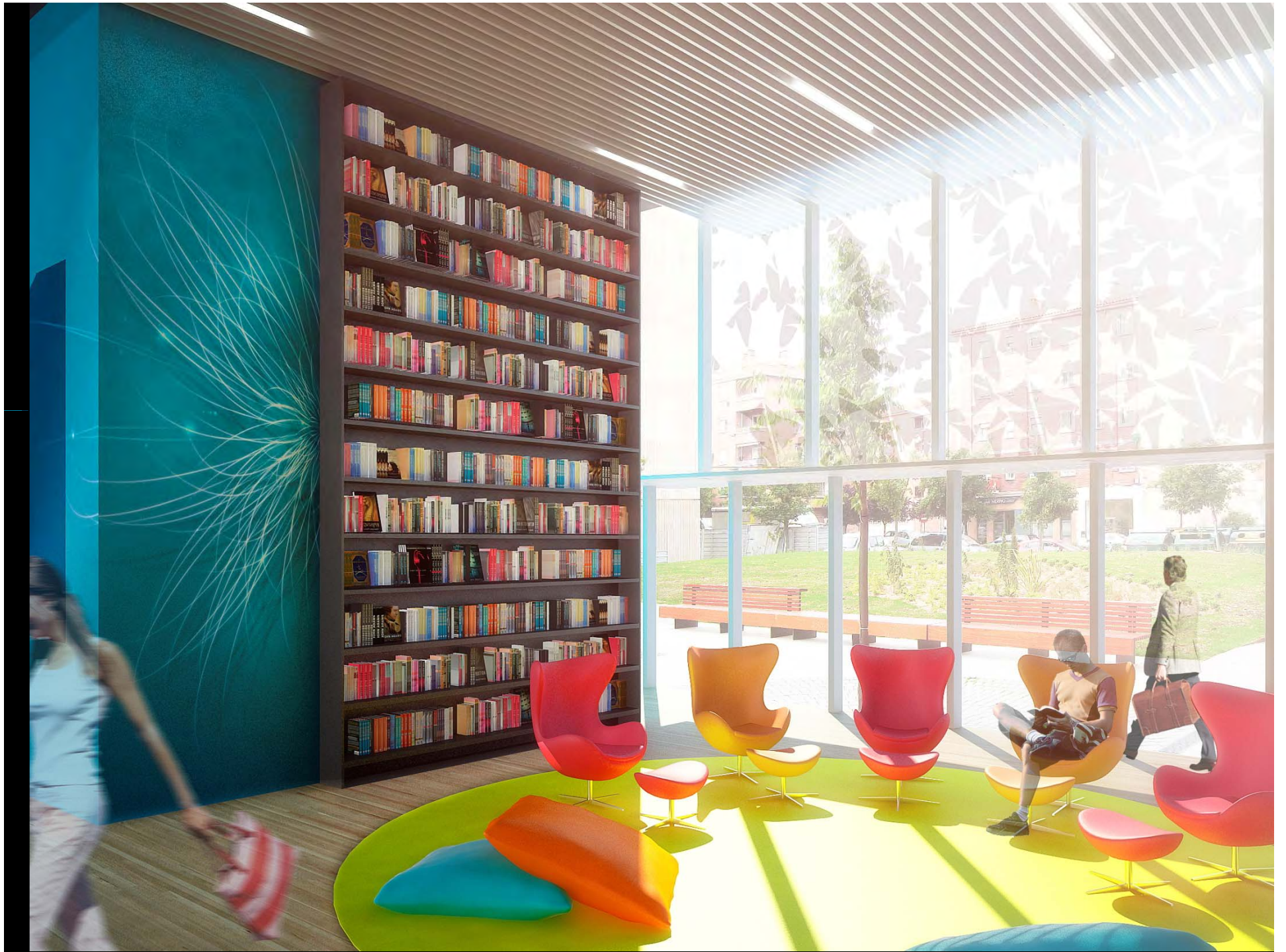


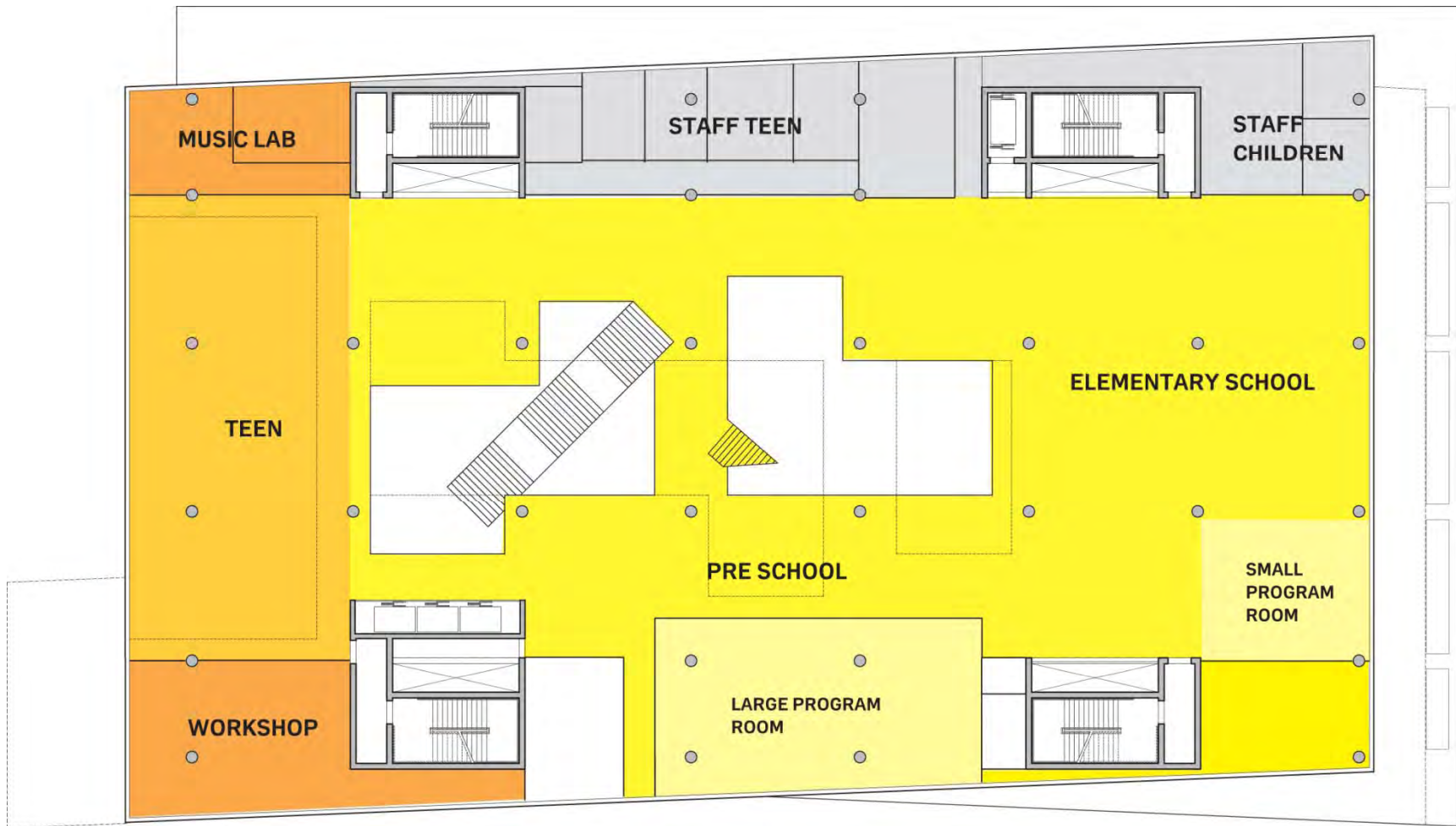




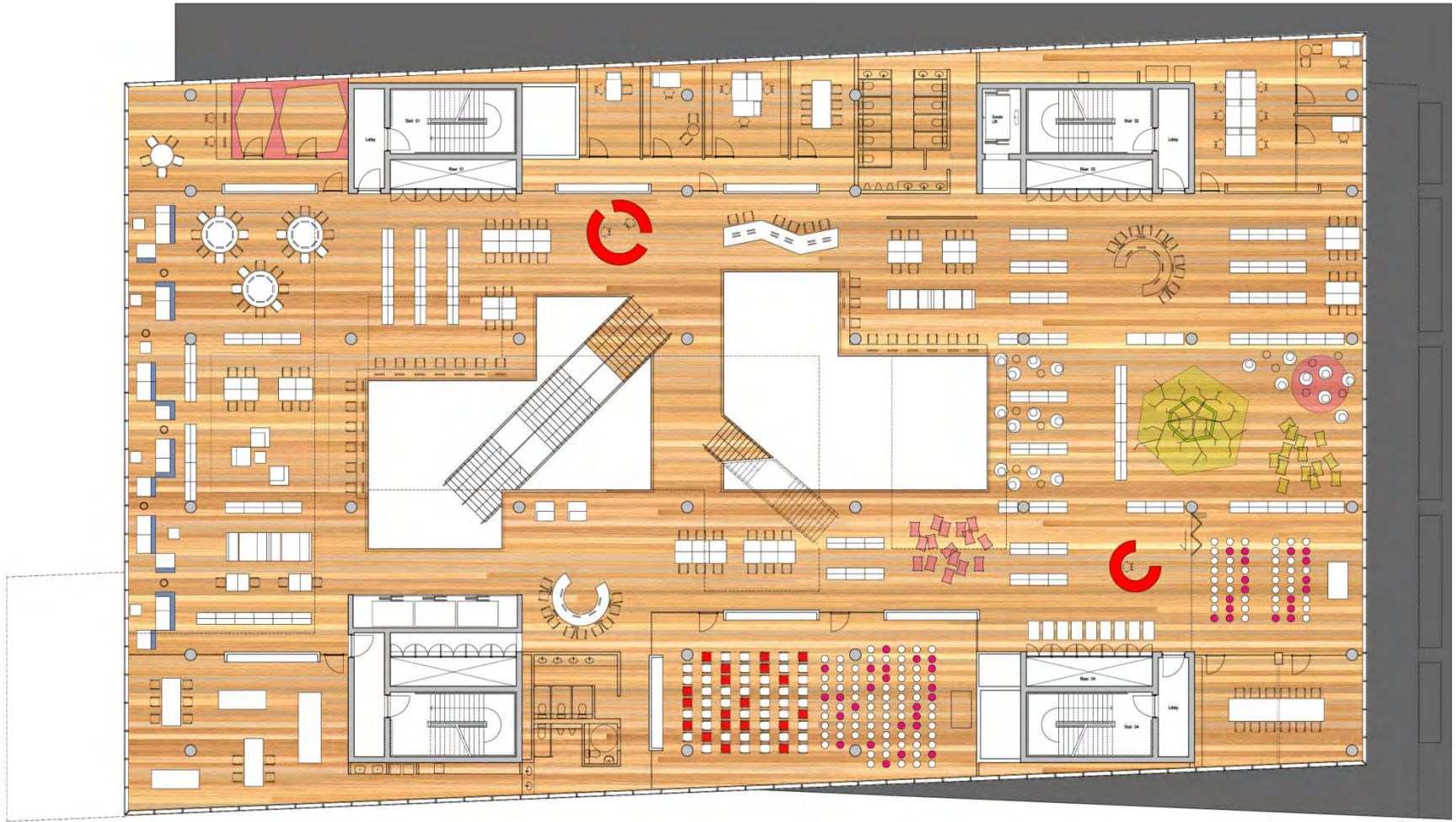






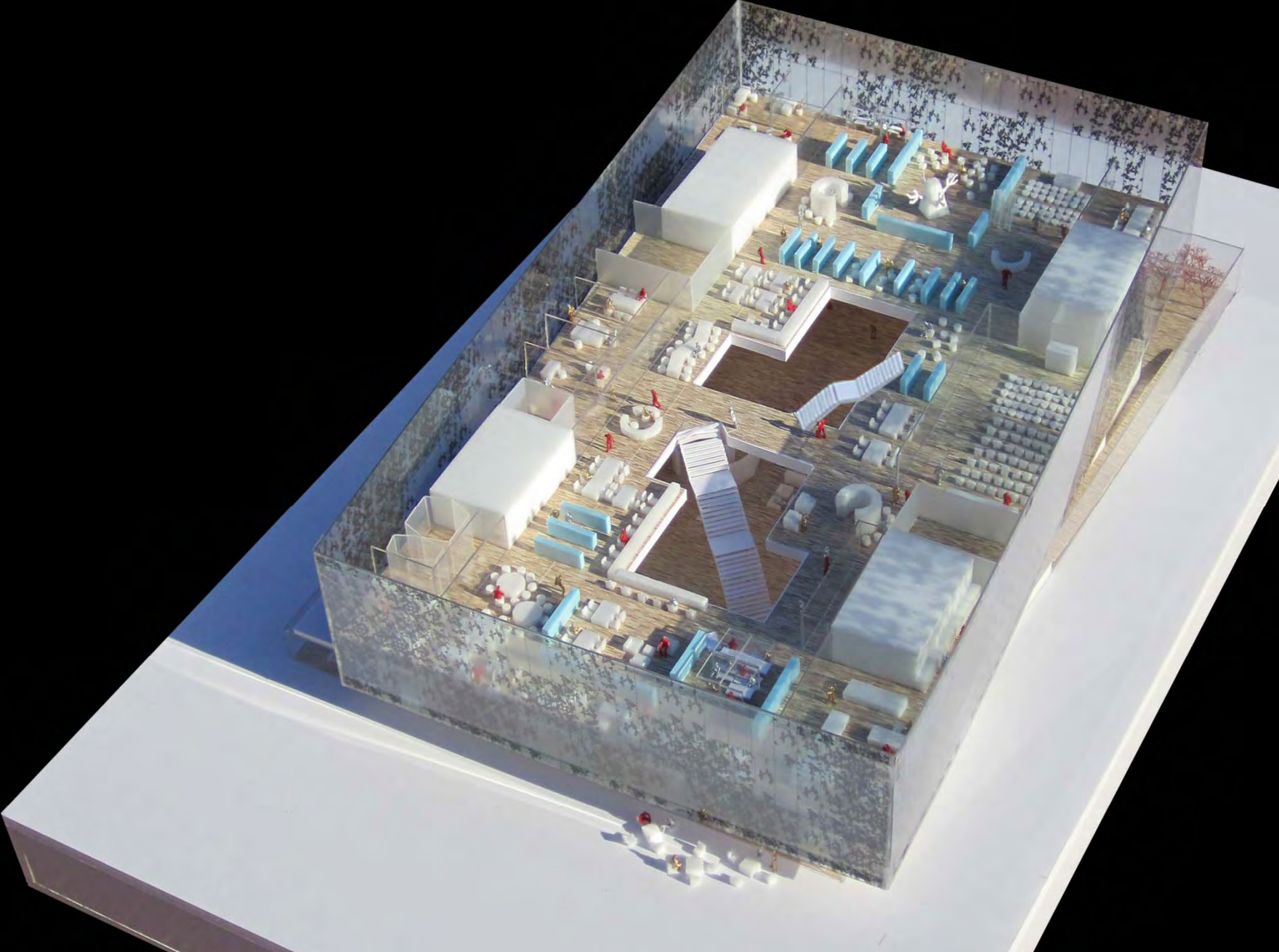


Level 2 - Adjacencies



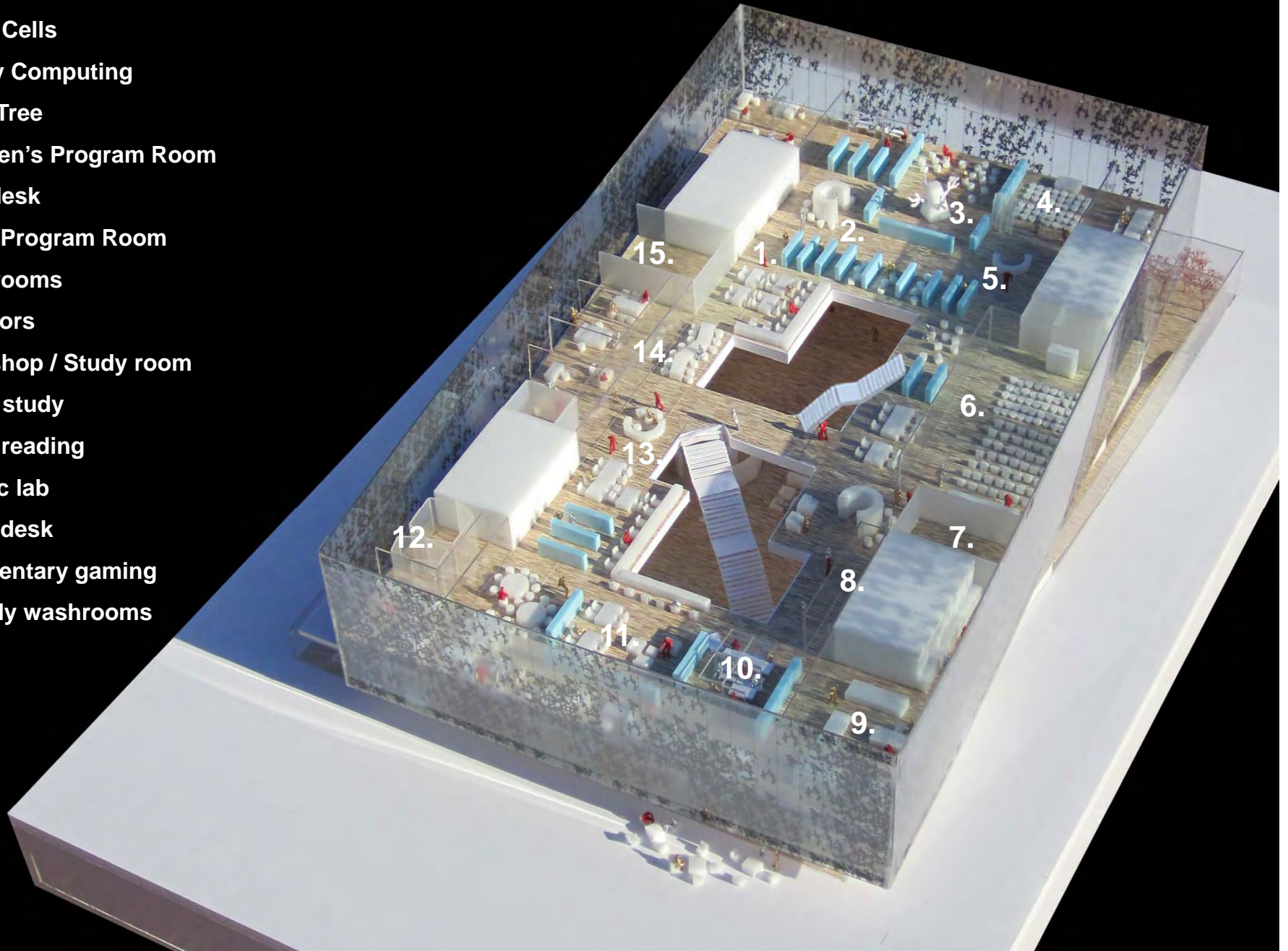
Level 2

Level 2 / Children / Teens



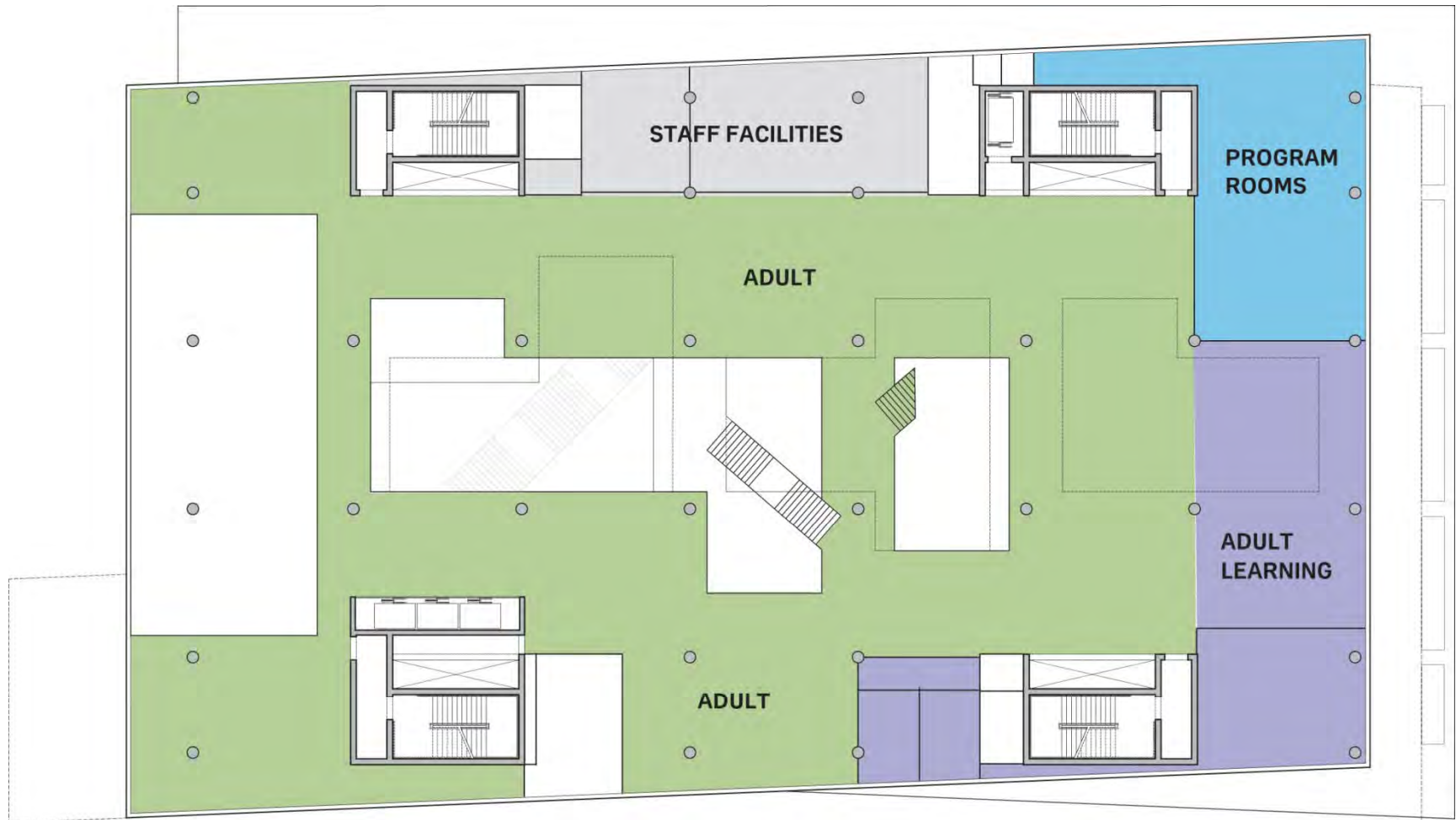
Level 2 / Children / Teens

1. Study Cells
2. Family Computing
3. Book Tree
4. Children's Program Room
5. Help desk
6. Large Program Room
7. Washrooms
8. Elevators
9. Workshop / Study room
10. Teen study
11. Teen reading
12. Music lab
13. Help desk
14. Elementary gaming
15. Family washrooms

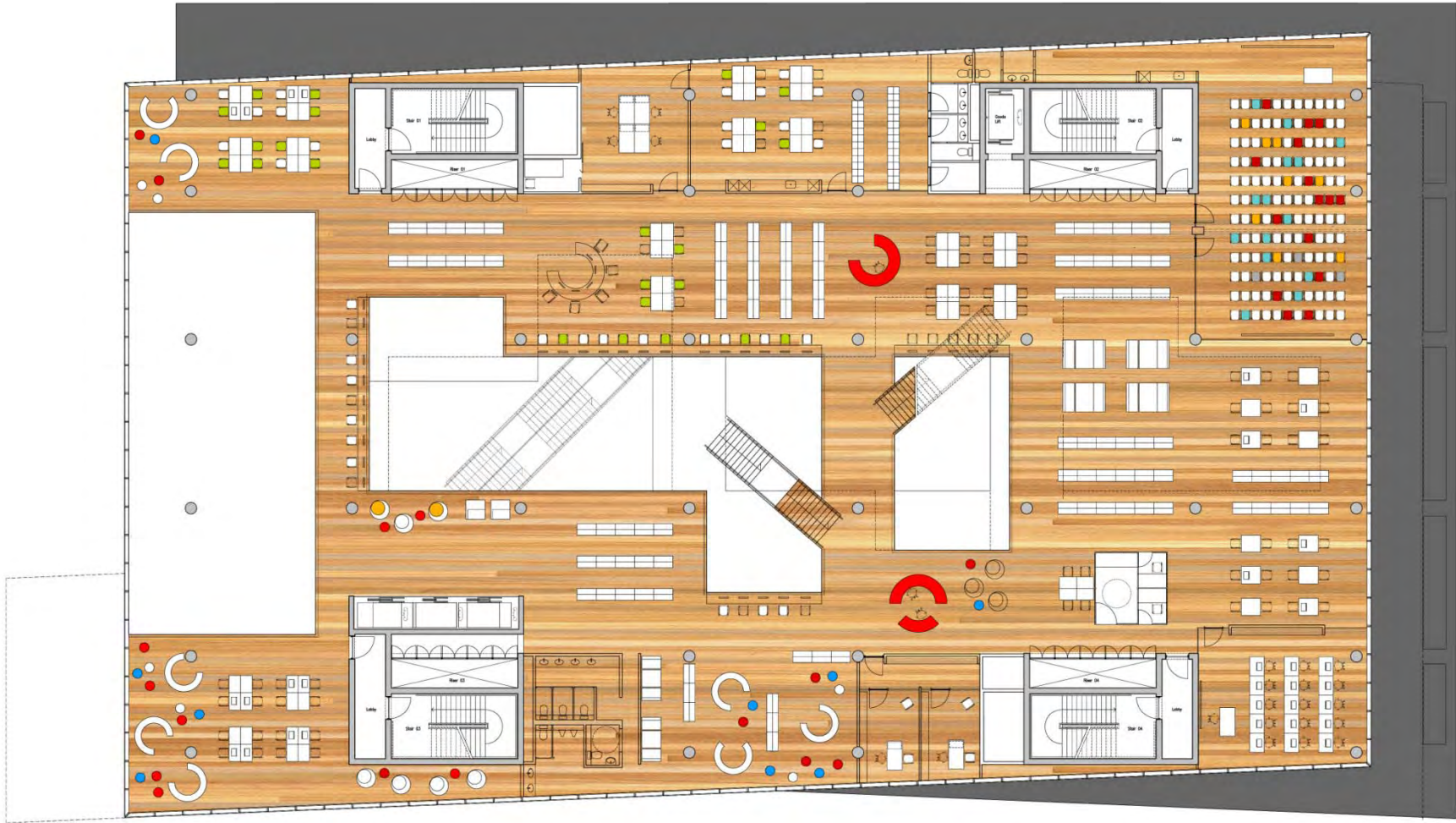






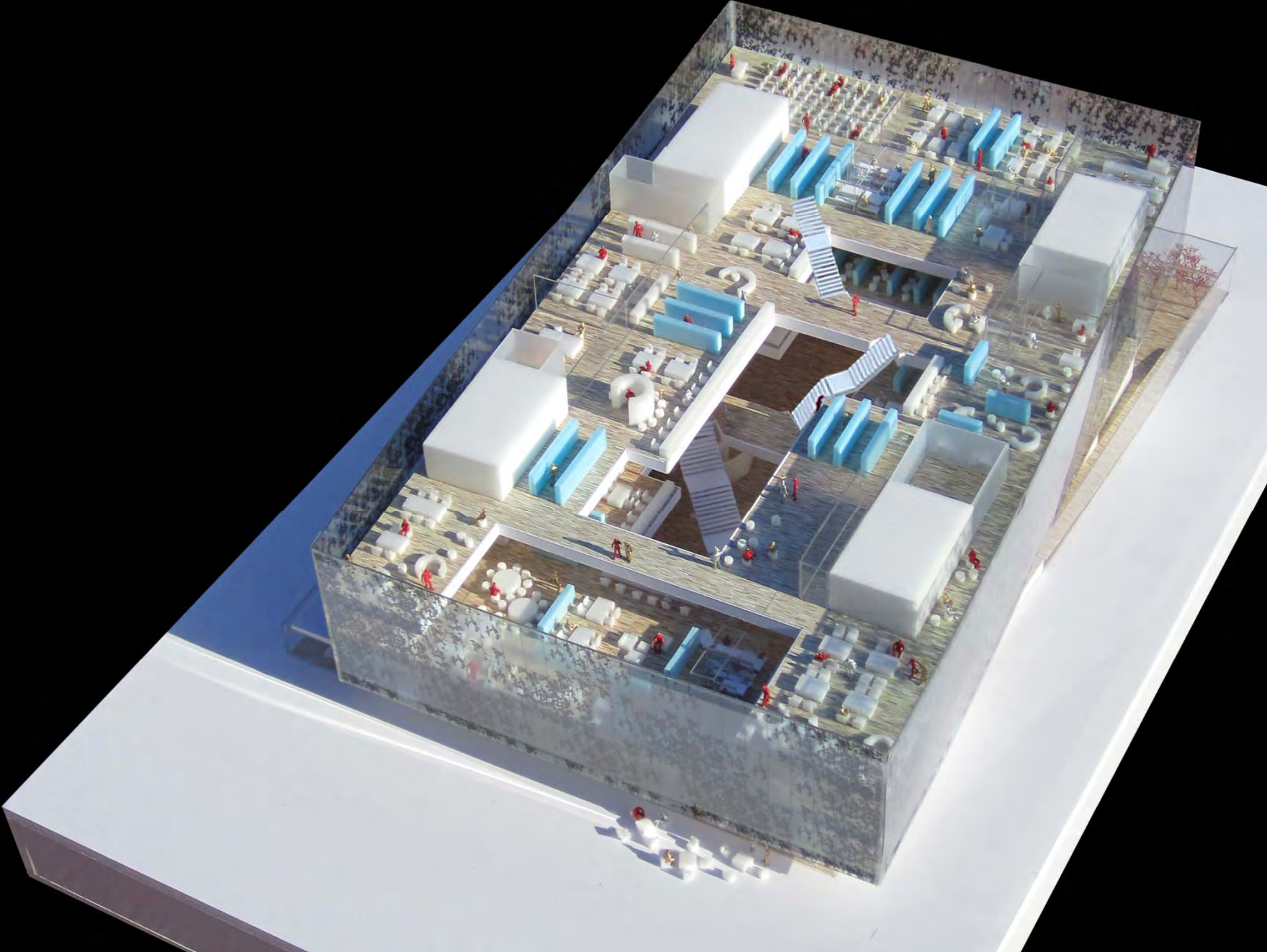


Level 3 - Adjacencies



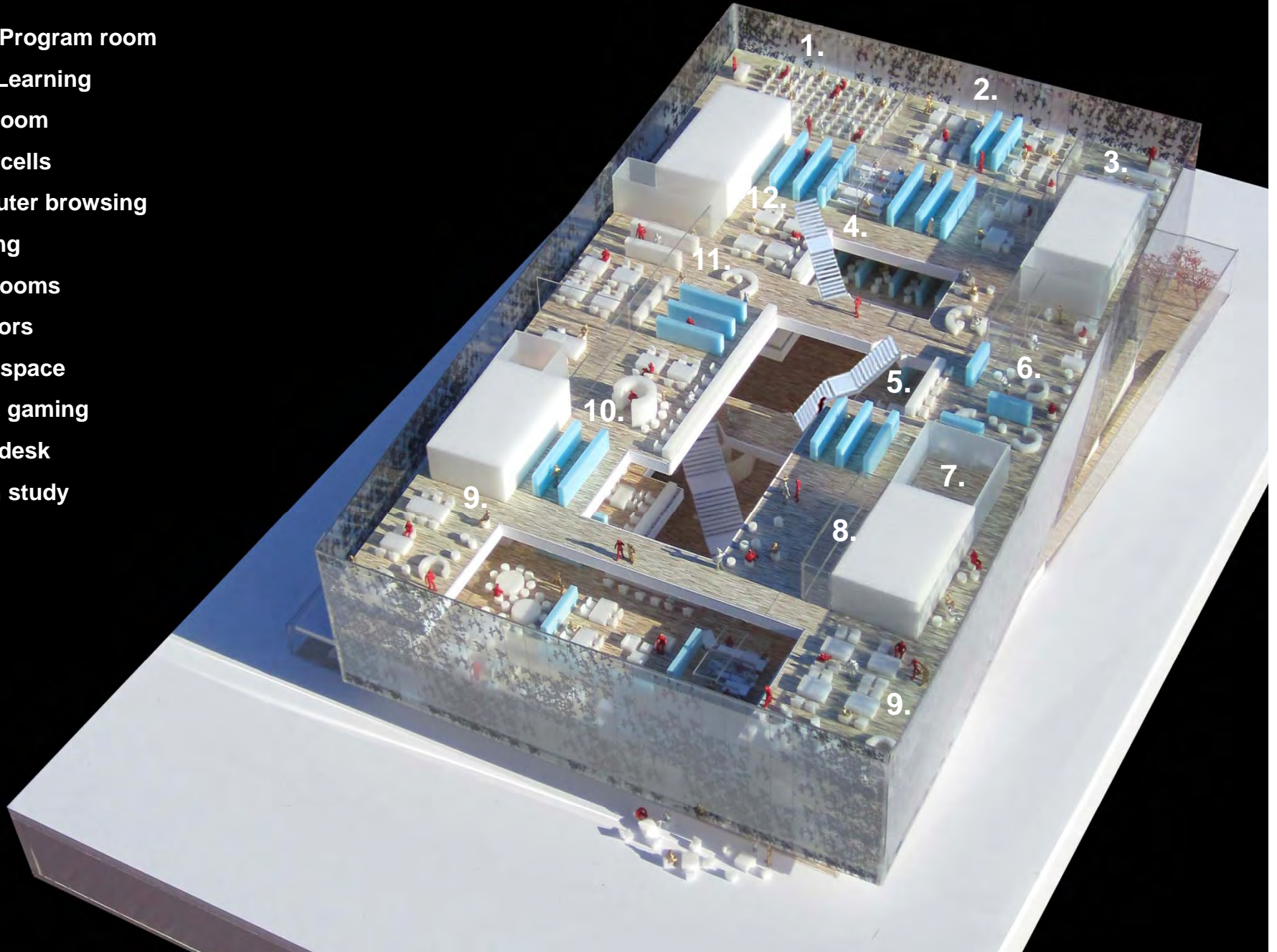
Level 3

Level 3 / Adult / Adult Learning



Level 3 / Adult / Adult Learning

1. Large Program room
2. Adult Learning
3. Classroom
4. Study cells
5. Computer browsing
6. Reading
7. Washrooms
8. Elevators
9. Study space
10. Adult gaming
11. Help desk
12. Open study



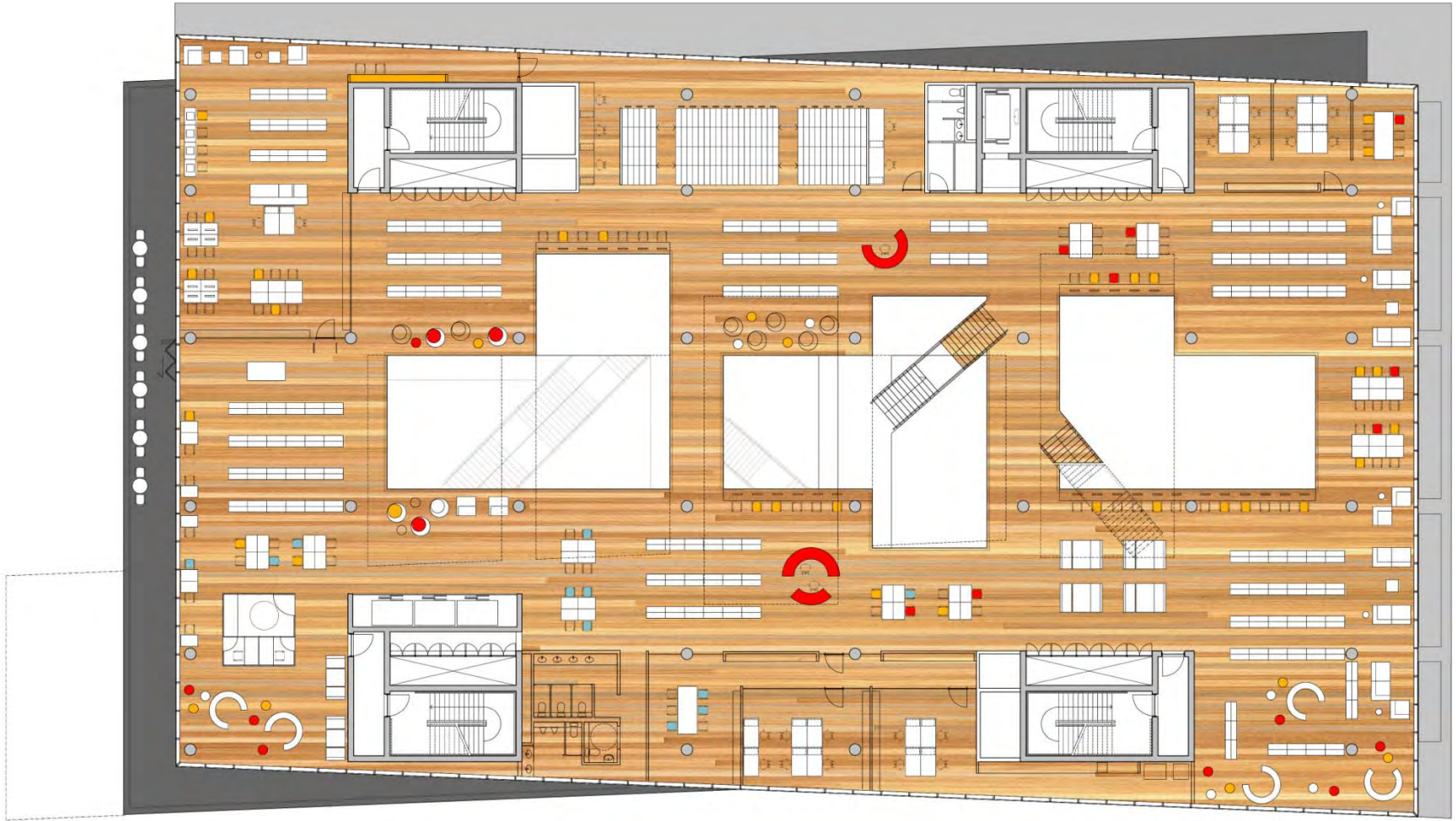






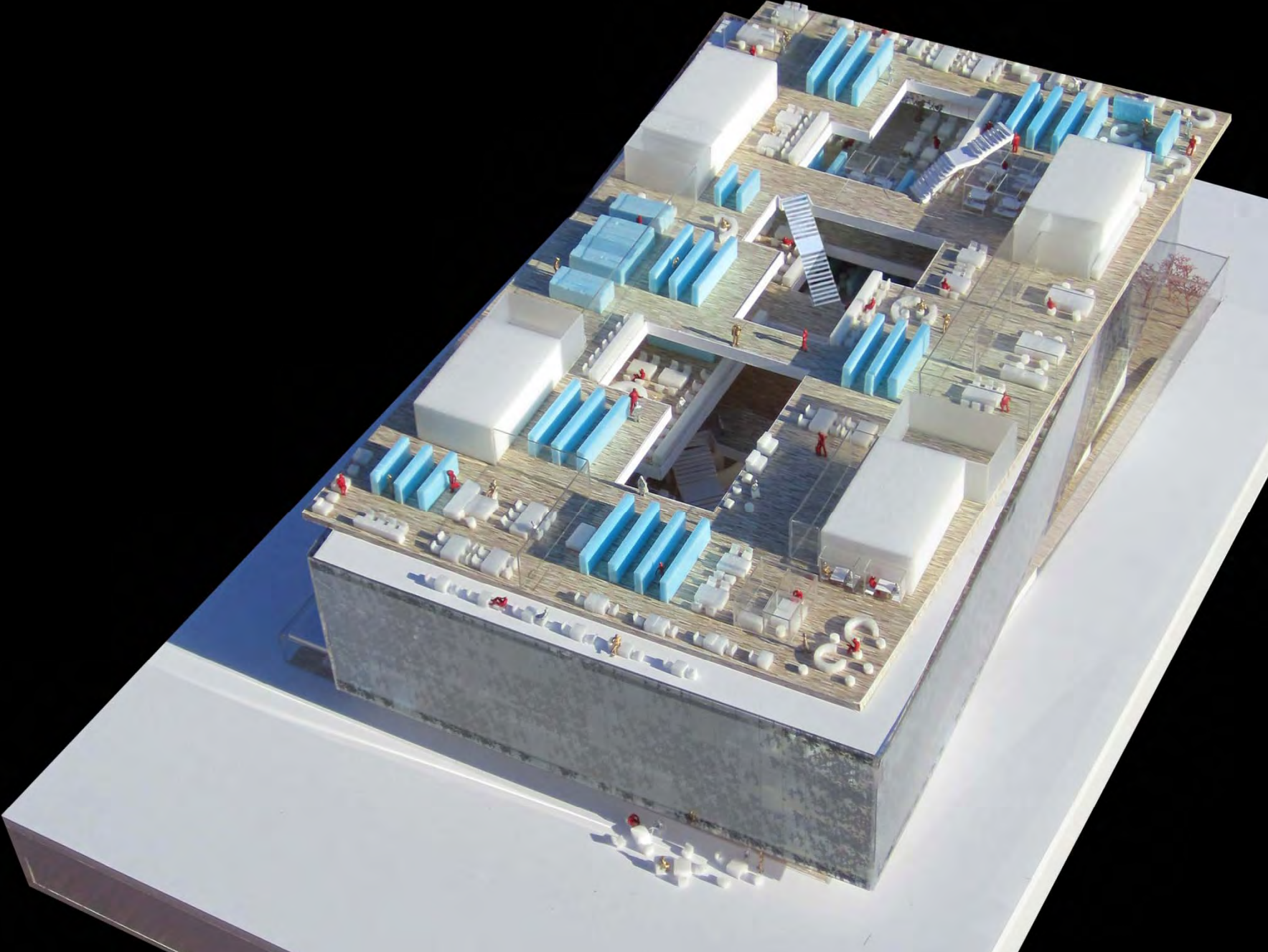


Level 4 - Adjacencies



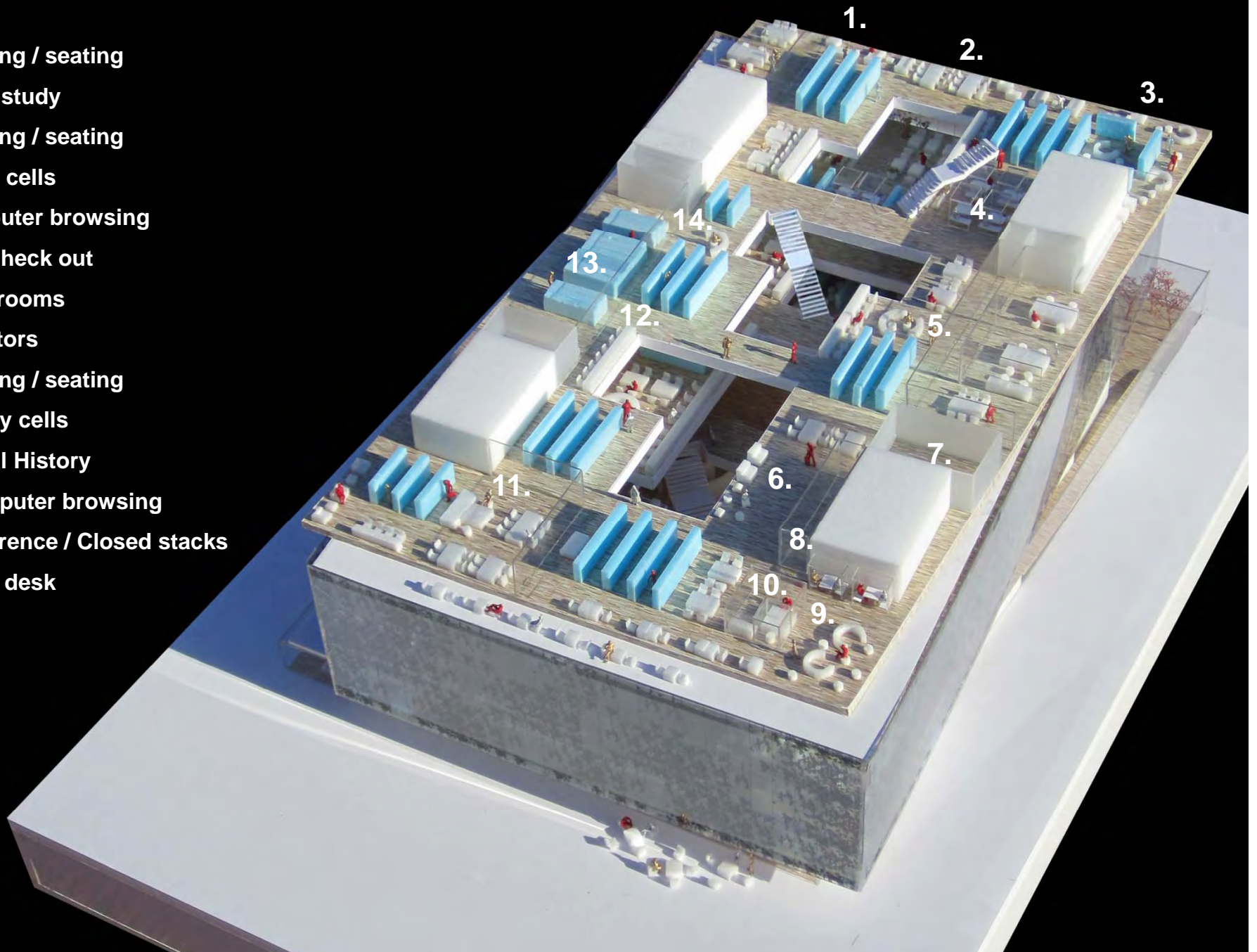
Level 4

Level 4 / Adult / Local History



Level 4 / Adult / Local History

1. Reading / seating
2. Open study
3. Reading / seating
4. Study cells
5. Computer browsing
6. Self Check out
7. Washrooms
8. Elevators
9. Reading / seating
10. Study cells
11. Local History
12. Computer browsing
13. Reference / Closed stacks
14. Help desk



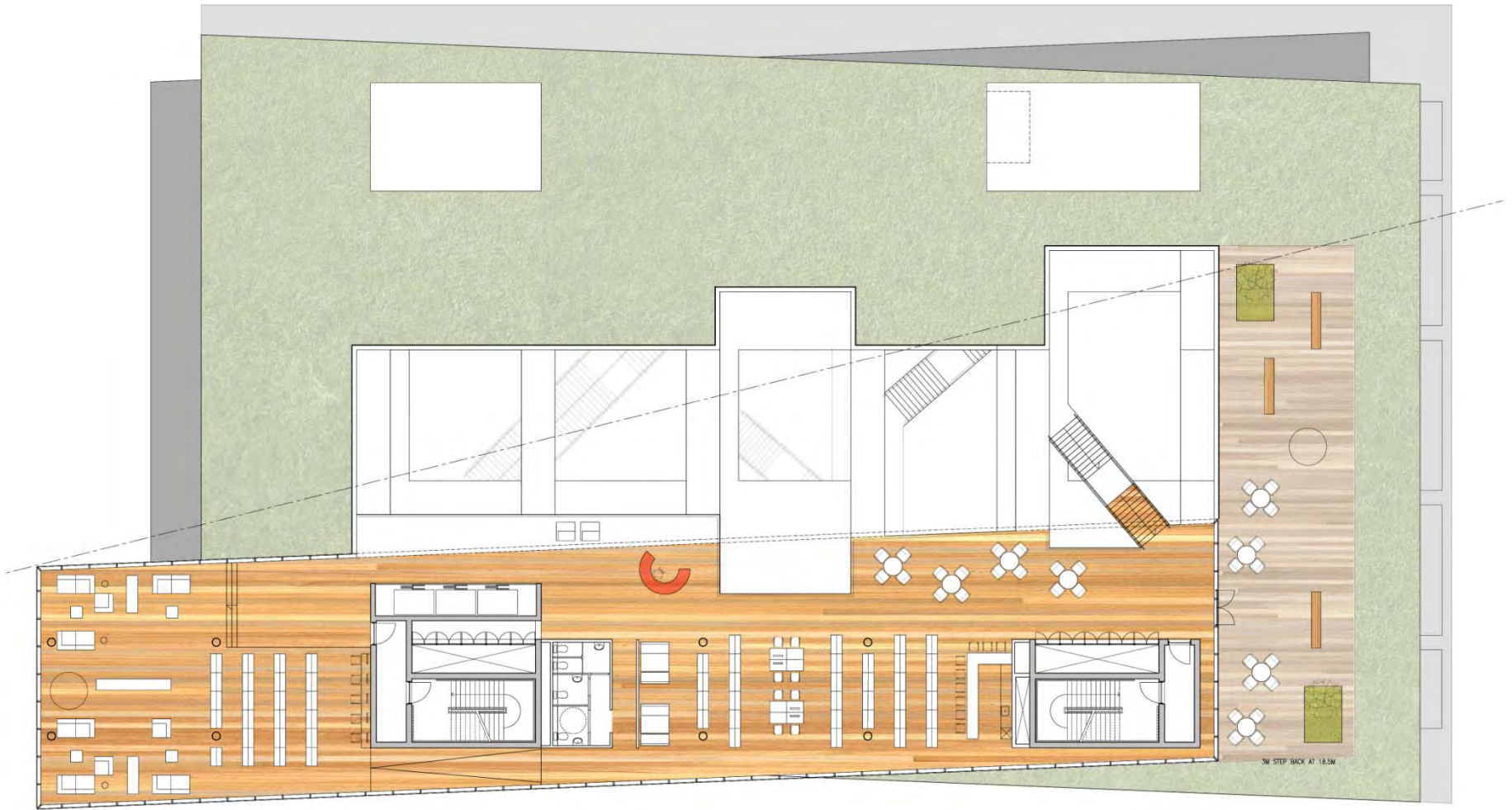








Level 5 - Adjacencies



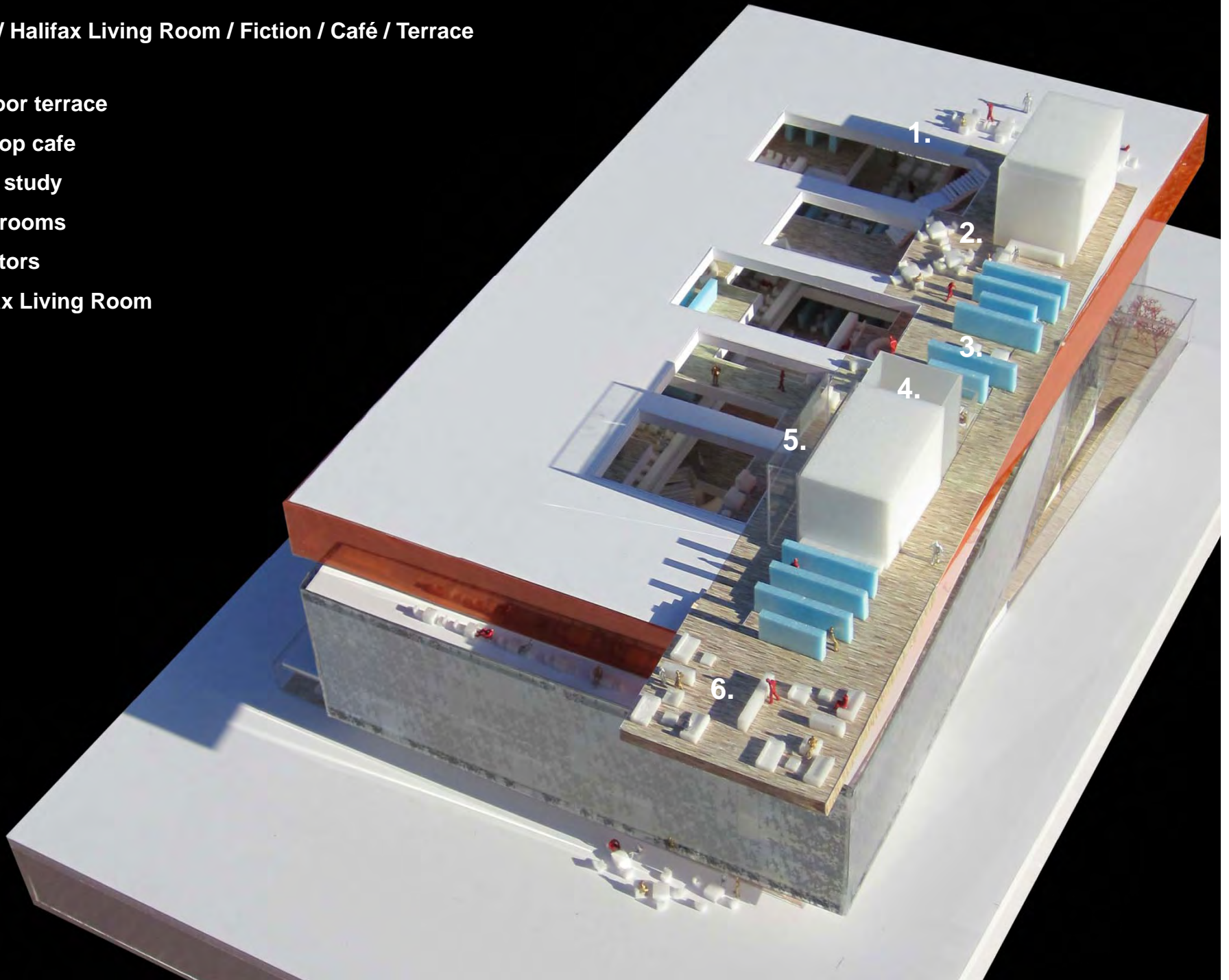
Level 5

Level 5 / Halifax Living Room / Fiction / Café / Terrace



Level 5 / Halifax Living Room / Fiction / Café / Terrace

- 1. Outdoor terrace**
- 2. Rooftop cafe**
- 3. Open study**
- 4. Washrooms**
- 5. Elevators**
- 6. Halifax Living Room**









What's next?

- **End of this phase of the consultation process but the beginning of a detailed design process**
- **Presentation to and approval by the Design Review Committee**
- **Public launch of the final design**



Project Schedule

- **Construction drawings and documents – Spring 2011**
- **Groundbreaking – Late Spring 2011**
- **Completion – December 31, 2013**
- **Open – Early 2014**



Staying in Touch

- Information updates added to the website (halifaxcentrallibrary.ca)
- E-mail notification to our mailing list
- Contact us by e-mail at central@halifaxpubliclibraries.ca



**THANK
YOU!**



A community space, a collaborative vision.

**Your input and ideas have guided the
design of the new Central Library.**

THANK YOU.

HalifaxCentralLibrary.ca

central@halifaxpubliclibraries.ca

(902) 490-5744

Find us on Facebook & Twitter

f t (@hfxpublib)